

L.E.S. Series HF "Scotch Box" Boilers

Represented by Meilner Mechanical Sales 19 W. College Drive Arlington Heights, IL 60004-1954 TEL: 847-253-1040 FAX: 847-253-1332

3-Pass Wetback Boilers 15# Steam or 30# Water 83% Efficiency 5 Year Vessel/Refractory Warranty

Horizontal firetube design with lightweight (70 lb. maximum) bolted/gasketed maintenance covers.

Rear manway provides easy access to furnace and tubes without burner removal.

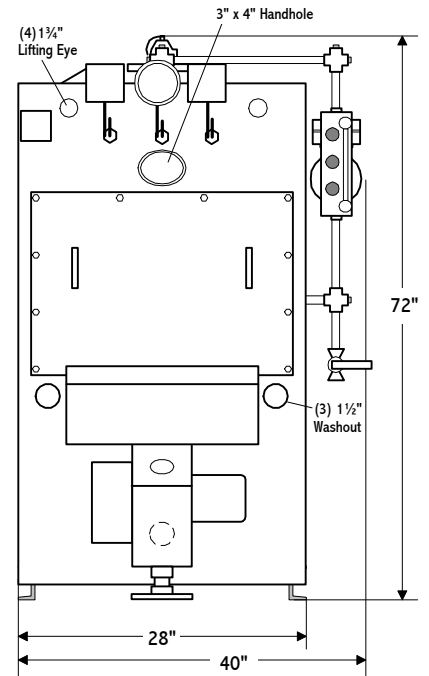
28" minimum rigging width with lifting eyes at top corners and tube removal from front or rear.

Complete boiler/burner packages meet UL, FM, and ASME CSD-1B requirements for natural gas firing.

Size "A" RATINGS // DATA // DIMENSIONS

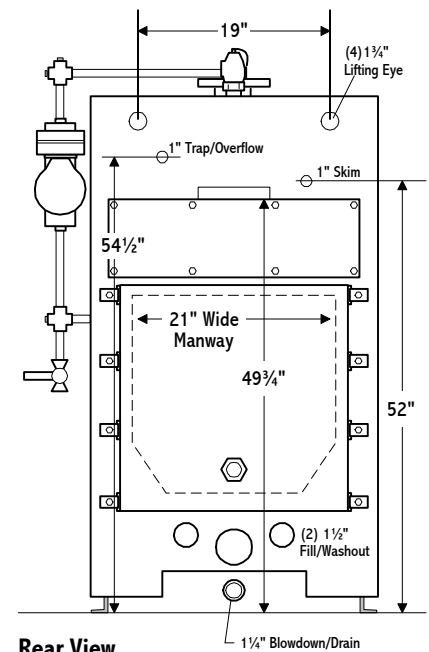
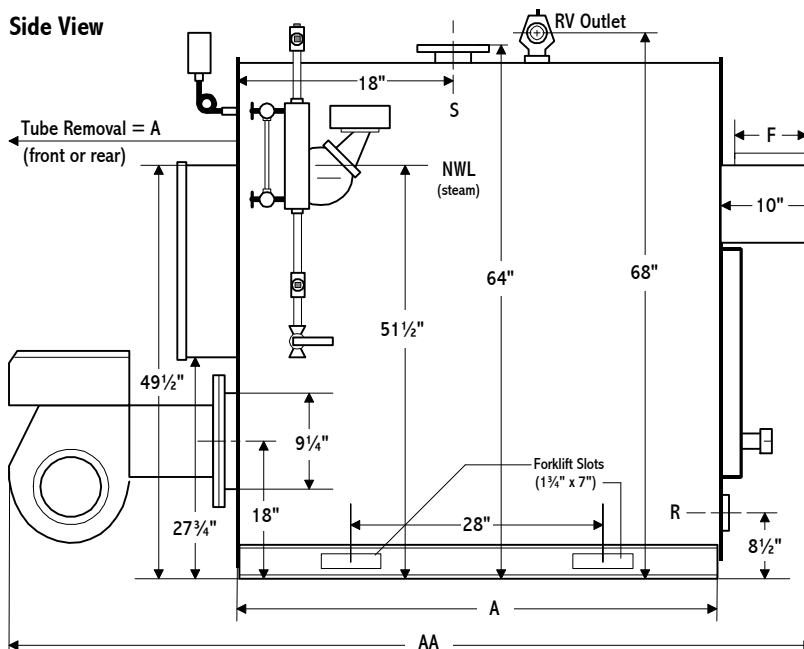
| Model: HF- | 580 | 800 | 1000 | 1250 | 1500 |
|---------------------------------|-------|-------|-------|-------|-------|
| Input | | | | | |
| Gas (MB/CF) CFH | 695 | 960 | 1200 | 1505 | 1805 |
| Oil (140MB/Gal) GPH | 5.0 | 6.9 | 8.6 | 10.8 | 12.9 |
| Output | | | | | |
| MBH | 580 | 800 | 1000 | 1250 | 1500 |
| Boiler Horsepower | 17 | 24 | 30 | 37 | 45 |
| Steam lbs/hr (212°F Feedwater) | 598 | 824 | 1031 | 1288 | 1546 |
| Burner Data | | | | | |
| Gas Burner Motor HP | .25 | .33 | .33 | .33 | .5 |
| Standard Gas Connection Size | 1 | 1 | 1¼ | 1¼ | 1½ |
| Minimum Inlet Gas for Std Train | 5.0" | 6.5" | 5.7" | 5.0" | 5.8" |
| Oil Burner Motor HP | .33 | .33 | .5 | .75 | 1 |
| Boiler Data | | | | | |
| Furnace Vol. (CU.FT.) | 4.5 | 6.1 | 6.1 | 7.7 | 9.3 |
| Water Cap. (Gal; NWL) | 89 | 116 | 109 | 135 | 161 |
| Water Cap. (Gal; Full) | 112 | 146 | 139 | 173 | 206 |
| Dry Weight (LBS) | 1350 | 1650 | 1750 | 2100 | 2425 |
| Flooded Weight (LBS) | 2279 | 2865 | 2908 | 3538 | 4143 |
| Dimensions in Inches | | | | | |
| A Skid Length | 29.25 | 39 | 39 | 48.75 | 58.5 |
| AA Overall Length | 70 | 80 | 80 | 90 | 100 |
| F Flue Connection Size | 6 | 8 | 8 | 8 | 8 |
| RV Tapping/Outlet Steam | 1¼/1¼ | 1¼/1¼ | 1¼/1¼ | 1½/1½ | 1½/1½ |
| RV Tapping/Outlet Water | 1¼/1 | 1¼/1 | 1¼/1¼ | 1½/1¼ | 1½/1¼ |
| R Return Size (NPT) | 2 | 2 | 3 | 3 | 3 |
| S Supply Size (*=Flange) | 3 | 3 | 4* | 4* | 4* |

Front View



Steam trim shown. Water trim available.

Side View



Rear View

L.E.S. Series HF "Scotch Box" Boilers

Represented by Meilner Mechanical Sales 19 W. College Drive Arlington Heights, IL 60004-1954 TEL: 847-253-1040 FAX: 847-253-1332

3-Pass Wetback Boilers 15# Steam or 30# Water 83% Efficiency 5 Year Vessel/Refractory Warranty

Horizontal firetube design with lightweight (80 lb. maximum) bolted/gasketed maintenance covers.

Rear manway provides easy access to furnace and tubes without burner removal.

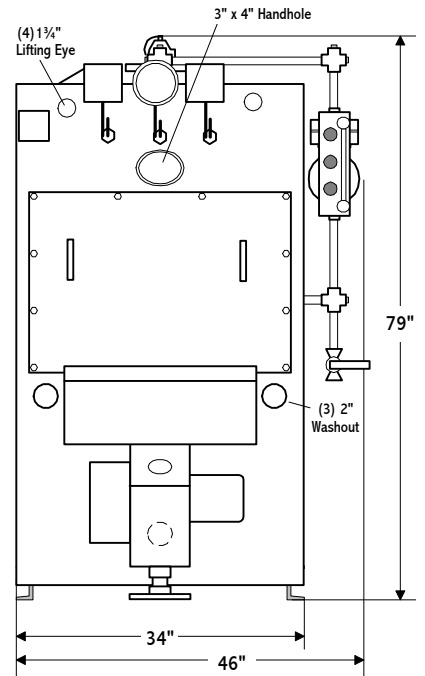
34" minimum rigging width with lifting eyes at top corners and tube removal from front or rear.

Complete boiler/burner packages meet UL, FM, and ASME CSD-1B requirements for natural gas firing.

Size "B" RATINGS // DATA // DIMENSIONS

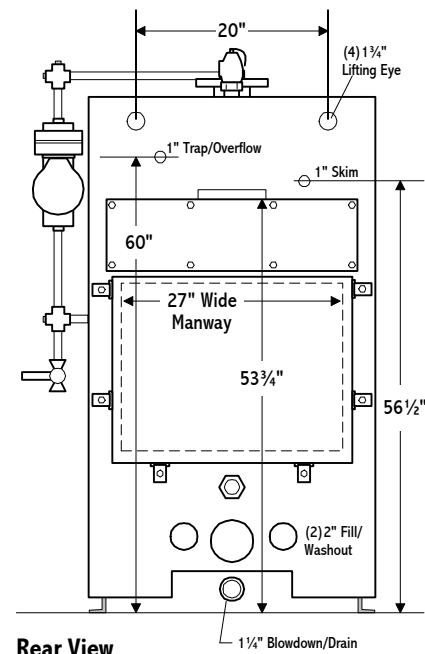
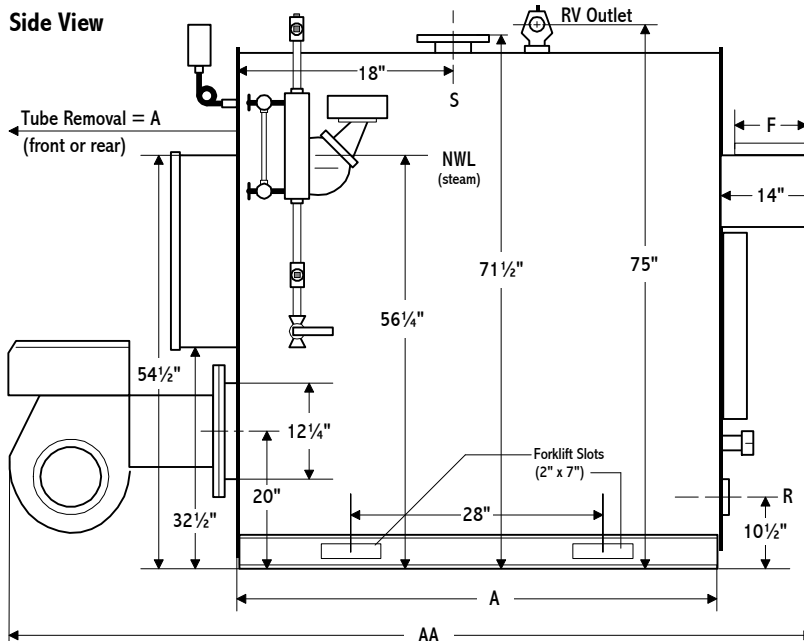
| Model: HF- | 1800 | 2070 | 2250 |
|---------------------------------|-------|-------|-------|
| Input | | | |
| Gas (MB/CF) CFH | 2165 | 2490 | 2710 |
| Oil (140MB/Gal) GPH | 15.5 | 17.8 | 19.4 |
| Output | | | |
| MBH | 1800 | 2070 | 2250 |
| Boiler Horsepower | 54 | 62 | 67 |
| Steam lbs/hr (212°F Feedwater) | 1855 | 2133 | 2319 |
| Burner Data | | | |
| Gas Burner Motor HP | .5 | 1 | 1 |
| Standard Gas Connection Size | 1½ | 1½ | 2 |
| Minimum Inlet Gas for Std Train | 6.2" | 5.5" | 6.2" |
| Oil Burner Motor HP | 1 | 1.5 | 1.5 |
| Boiler Data | | | |
| Furnace Vol. (CU.FT.) | 13.5 | 15.7 | 15.7 |
| Water Cap. (Gal; NWL) | 208 | 238 | 238 |
| Water Cap. (Gal; Full) | 277 | 319 | 319 |
| Dry Weight (LBS) | 3000 | 3450 | 3450 |
| Flooded Weight (LBS) | 5304 | 6106 | 6106 |
| Dimensions in Inches | | | |
| A Skid Length | 58.5 | 68.25 | 68.25 |
| AA Overall Length | 102 | 112 | 112 |
| F Flue Connection Size | 10 | 10 | 10 |
| RV Tapping/Outlet Steam | 1½/1½ | 2/2 | 2/2 |
| RV Tapping/Outlet Water | 1½/1½ | 2/1½ | 2/1½ |
| R Return Size (NPT) | 4 | 4 | 4 |
| S Supply Size (*=Flange) | 6* | 6* | 6* |

Front View



Steam trim shown. Water trim available.

Side View



Rear View

L.E.S. Series HF "Scotch Box" Boilers

Represented by Meilner Mechanical Sales 19 W. College Drive Arlington Heights, IL 60004-1954 TEL: 847-253-1040 FAX: 847-253-1332

3-Pass Wetback Boilers 15# Steam or 30# Water 83% Efficiency 5 Year Vessel/Refractory Warranty

Horizontal firetube design with lightweight (85 lb. maximum) bolted/gasketed maintenance covers.

Rear manway provides easy access to furnace and tubes without burner removal.

34" minimum rigging width with lifting eyes at top corners and tube removal from front or rear.

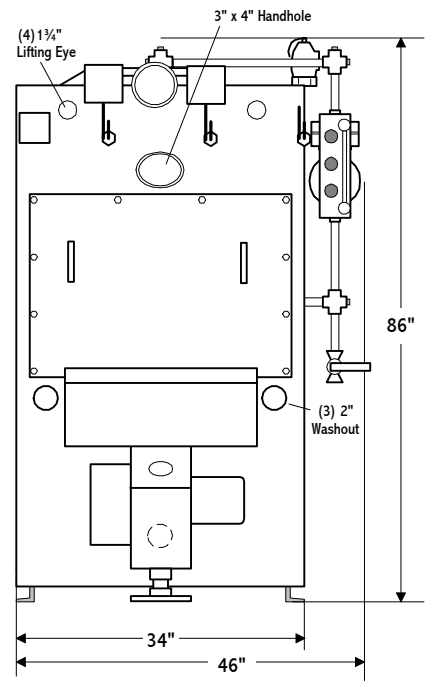
Complete boiler/burner packages meet UL, FM, and ASME CSD-1B requirements for natural gas firing.

Size "C" RATINGS // DATA // DIMENSIONS

| Model: HF- | 2650 | 3000 | 3350 | 3680 | 4000* |
|---------------------------------|-------|-------|-------|-------|-------|
| Input | | | | | |
| Gas (MB/CF) CFH | 3190 | 3610 | 4035 | 4430 | 4850 |
| Oil (140MB/Gal) GPH | 22.8 | 25.8 | 28.8 | 31.6 | 34.6 |
| Output | | | | | |
| MBH | 2650 | 3000 | 3350 | 3680 | 4000 |
| Boiler Horsepower | 79 | 90 | 100 | 110 | 120 |
| Steam lbs/hr (212°F Feedwater) | 2731 | 3092 | 3452 | 3792 | 4122 |
| Burner Data | | | | | |
| Gas Burner Motor HP | 2 | 3 | 3 | 3 | 5 |
| Standard Gas Connection Size | 2 | 2 | 2 | 2 | 2½ |
| Minimum Inlet Gas for Std Train | 6.0" | 7.0" | 7.5" | 8.5" | 11" |
| Oil Burner Motor HP | 2 | 3 | 3 | 5 | 5 |
| Boiler Data | | | | | |
| Furnace Vol. (CU.FT.) | 20.3 | 20.3 | 23.2 | 23.2 | 23.2 |
| Water Cap. (Gal; NWL) | 282 | 270 | 306 | 303 | 303 |
| Water Cap. (Gal; Full) | 363 | 350 | 398 | 395 | 395 |
| Dry Weight (LBS) | 3925 | 4075 | 4550 | 4600 | 4600 |
| Flooded Weight (LBS) | 6947 | 6993 | 7868 | 7893 | 7893 |
| Dimensions in Inches | | | | | |
| A Skid Length | 68.25 | 68.25 | 78 | 78 | 78 |
| AA Overall Length | 114 | 114 | 124 | 128 | 128 |
| F Flue Connection Size | 12 | 12 | 12 | 12 | 12 |
| RV Tapping/Outlet Steam | 2½/2½ | 2½/2½ | 2½/2½ | 2½/2½ | 2½/2½ |
| RV Tapping/Outlet Water | 2½/1½ | 2½/2 | 2½/2 | 2½/2 | 2½/2½ |
| R Return Size (NPT) | 4 | 4 | 4 | 4 | 4 |
| S Supply Size (*=Flange) | 6* | 6* | 6* | 8* | 8* |

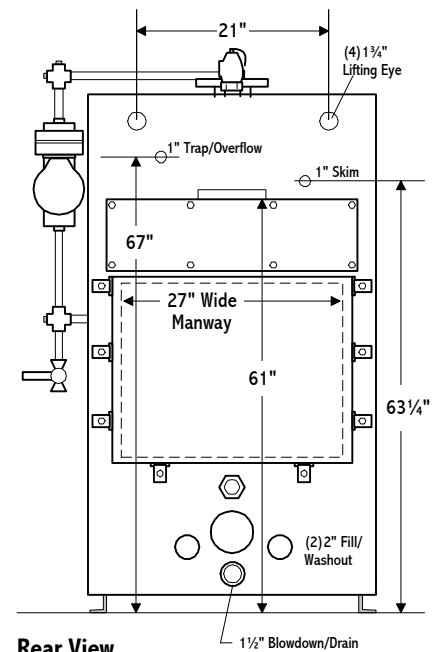
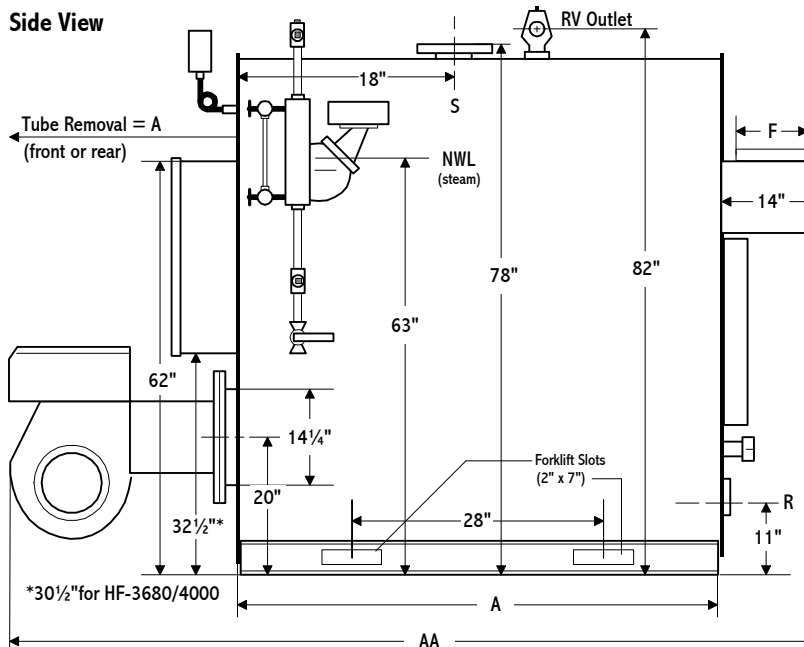
*HF-4000 warranted efficiency = 82.5%.

Front View



Steam trim shown. Water trim available.

Side View



Rear View