

# L.E.S. Series HCW "Scotch Box" Boilers

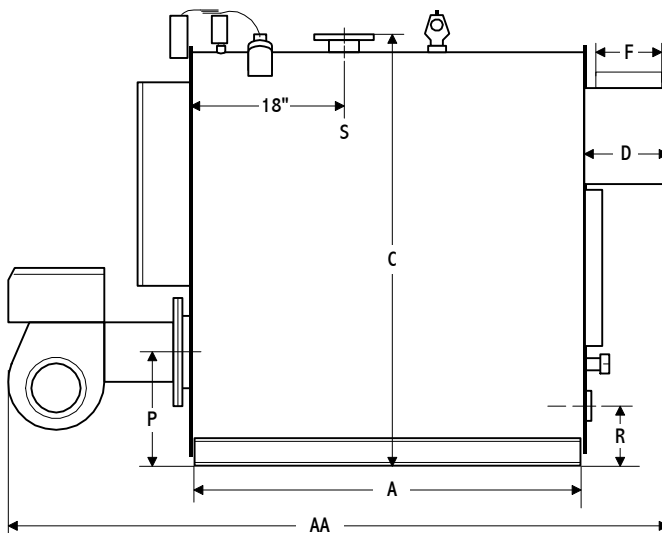
3-Pass Firetube 30, 40, or 80 psi Water 83% Efficiency 4 sq.ft. Waterside Heating Surface per BHP

## Series HCW RATINGS // DATA // DIMENSIONS

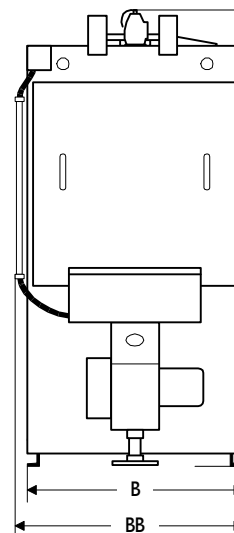
Model: HCW-	3060	3350	3650	3680	4000	4140	3500H	3680H	4000H
<b>Input</b>									
Gas (MB/CF) CFH	3685	4035	4400	4430	4820	4990	4220	4430	4820
Oil (140MB/Gal) GPH	26.3	28.8	31.4	31.6	34.4	35.6	30.1	31.6	34.4
<b>Output</b>									
MBH	3060	3350	3650	3680	4000	4140	3500	3680	4000
Boiler Horsepower	91.4	100.1	109.0	109.9	119.5	123.7	104.6	109.9	119.5
<b>Gas Burner Motor HP</b>	3.0	3.0	3.0	3.0	5.0	5.0	3.0	3.0	5.0
<b>Oil Burner Motor HP</b>	3.0	3.0	5.0	5.0	5.0	5.0	5.0	5.0	5.0
<b>SQ.FT. Heating Surface</b>									
Primary	41.0	46.5	46.4	51.9	51.8	51.8	46.4	51.9	51.8
Total Fireside	335	360	392	396	427	448	373	396	427
Total Waterside	371	399	434	439	473	497	414	439	473
<b>Boiler Data</b>									
Furnace Vol. (CU.FT.)	17.4	20.3	20.3	23.2	23.2	23.2	20.3	23.2	23.2
Water Cap. (Gal; Full)	259	311	301	359	350	343	307	359	350
Dry Weight (LBS)	3375	3950	4000	4375	4450	4525	4275	4625	4750
<b>Dimensions in Inches</b>									
<b>A</b> Skid Length	59	68	68	78	78	78	68	78	78
<b>AA</b> Overall Length	108	120	120	132	132	132	120	132	132
<b>B</b> Width	34	34	34	34	34	34	34	34	34
<b>BB</b> Trimmed Width (Std)	36	36	36	36	36	36	36	36	36
<b>C</b> Height	76	76	76	76	76	76	76	76	76
<b>CC</b> Trimmed Height	81	81	81	82	82	82	81	82	82
<b>D</b> Rear Smokebox Depth	16	16	16	16	16	16	16	16	16
<b>F</b> Flue Connection Size	12	12	12	12	12	12	12	12	12
Flue Connection Height	68	68	68	68	68	68	70	70	70
<b>P</b> Burner Port Height	20	20	20	20	20	20	20	20	20
Burner Port ID	14½	14½	14½	14½	14½	14½	14½	14½	14½
<b>R</b> Return Size (NPT)	4	4	4	4	4	4	4	4	4
Return Height	10½	10½	10½	10½	10½	10½	10½	10½	10½
<b>S</b> Supply Size (*=Flange)	4*	4*	4*	4*	4*	4*	4*	4*	4*
Supply Height	76	76	76	76	76	76	76	76	76

Models designated "H" available for 40 or 80 psi service.

Side View



Front View



Rear View

